

17309

16172

4 Hours / 100 Marks

Seat No.

--	--	--	--	--	--	--	--	--	--

- Instructions* – (1) All Questions are *Compulsory*.
- (2) Answer each next main Question on a new page.
- (3) Illustrate your answers with neat sketches wherever necessary.
- (4) Figures to the right indicate full marks.
- (5) Assume suitable data, if necessary.
- (6) Use of Non-programmable Electronic Pocket Calculator is permissible.
- (7) Mobile Phone, Pager and any other Electronic Communication devices are not permissible in Examination Hall.

Marks

1. a) Answer any **THREE** of the following: **12**
- (i) Draw conventional symbol for,
- 1) Sink
 - 2) Wash basin
 - 3) Bed
 - 4) Urinal
- (ii) Explain with sketch principle of privacy.
- (iii) Write any eight construction notes for load bearing structure.
- (iv) State principles of perspective view.
- b) Draw a line plan to scale 1:50 for a library building at district level. **8**

P.T.O.

17309

[2]

Marks

2. Figure No. 1 shows a line plan of a residential building. Draw to a scale 1:50 the following views:
- | | |
|----------------------|-----------|
| (i) Developed plan | 12 |
| (ii) Front elevation | 8 |
| (iii) Section AB | 8 |

Use the following data:

- 1) Depth of foundation 1.30 m below GL.
- 2) Plinth height above GL 800 mm
- 3) Ceiling height 2850 mm
- 4) Wall thickness 300 mm for external and 230 mm for internal walls.
- 5) Slab thickness 120 mm
- 6) Chhajja 600 mm projection
- 7) UCR masonry 500 and 700 mm wide in foundation and depth 550 mm each.
- 8) Assume suitable data if required.

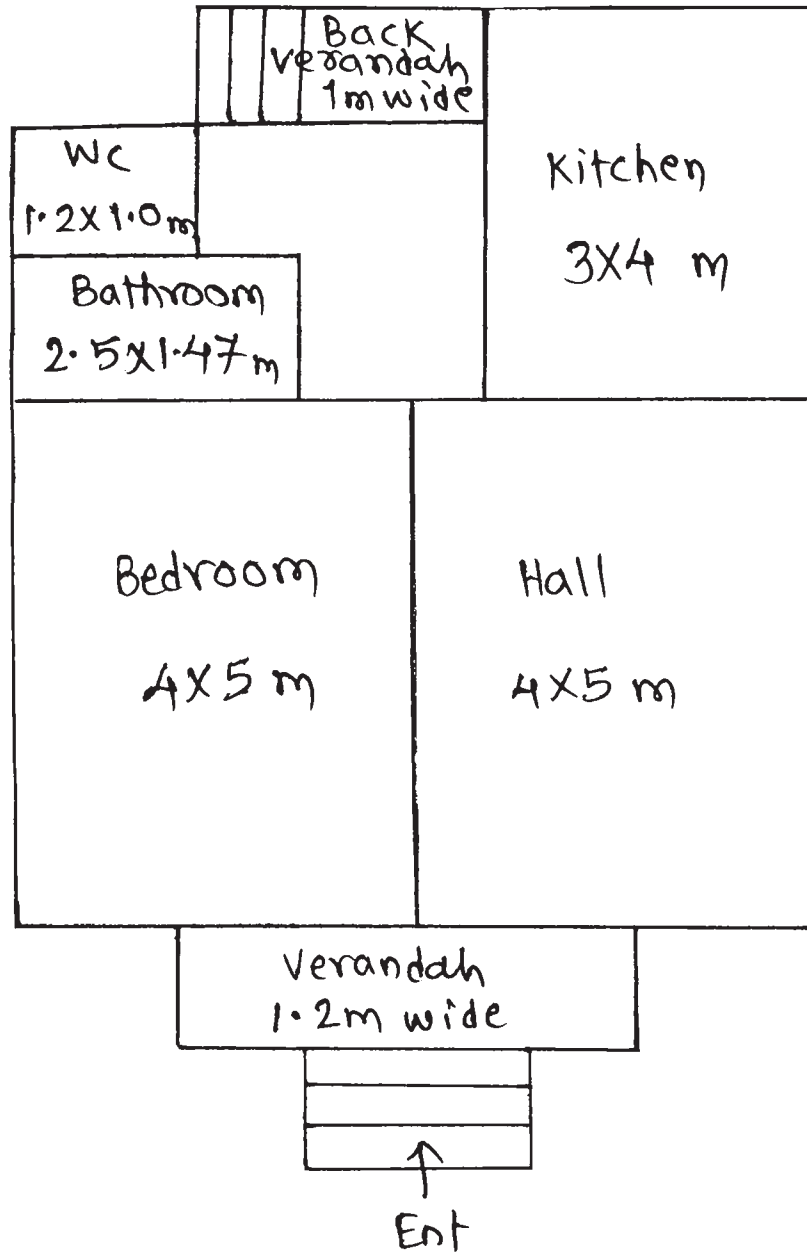


Fig. No. 1

3. Answer any THREE of the following: 24

- a) Draw to a suitable scale terrace plan of the building mentioned in Question No. 2.
- b) Prepare area statement for building mentioned in question no. 2. Take plot size 18 m × 25 m. Calculate FSI consumed.
- c) State various units required for bank building at district place.
- d) Define perspective view, picture plane, station point, true height and give any four differences between one point and two perspective view.

4. Answer any TWO of the following : 16

- a) Explain with examples principle of sanitation with cleanliness, ventilation and light.
- b) Draw a detailed plan and section for a RCC footing from following data for stepped footing.
 - (i) Size of column 230 × 300 mm
 - (ii) First step - 1000 × 1200 mm
 - (iii) Second step - 800 × 1000 mm
 - (iv) Depth of each footing - 250 mm
 - (v) Depth of foundation 1200 mm
 - (vi) Assume suitable data and mention it clearly.
- c) Prepare schedule of opening for question No. 2 building.

5. Attempt the following:

12

Figure No. 2 shows a pedestal and draw perspective drawing of it. Assume eye level at 1.5 m above ground level. The station point is 3 m from picture plane.

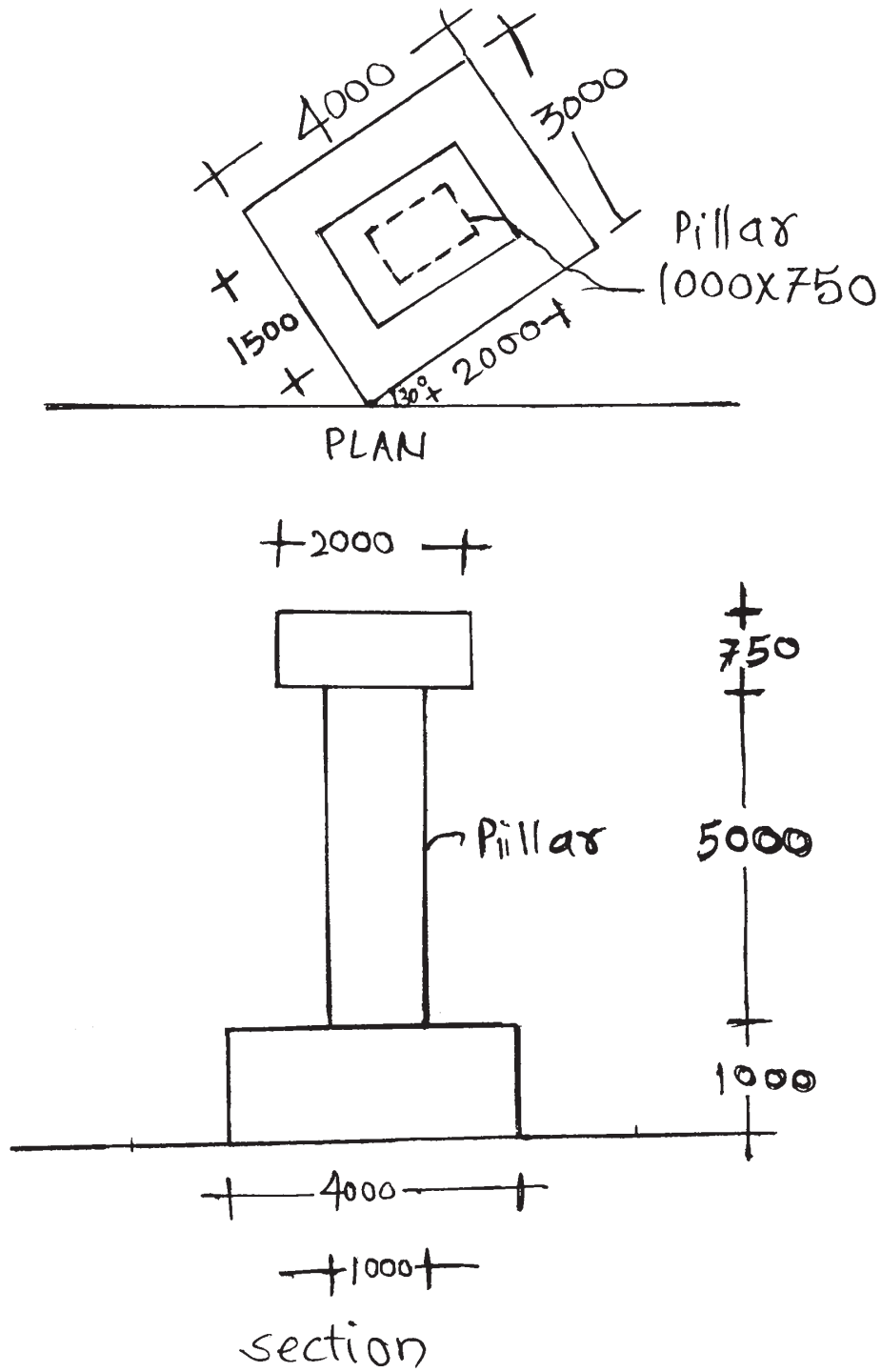


Fig. No. 2